

Japan

# Tomamu Hokkaido



## Resort Highlights

- Explore the Colours of Hokkaido, with a fascinating excursion programme
- Witness the breathtaking Sea of Clouds from Unkai Terrace at sunrise
- Experience the fun at Mina Mina Beach, the largest indoor Wave Pool in Japan!
- Savour Farm-to-table Hokkaido speciality - Yakiniku barbecue
- Discover the flavour of Japan, with tasting sessions of Japanese whisky and sake

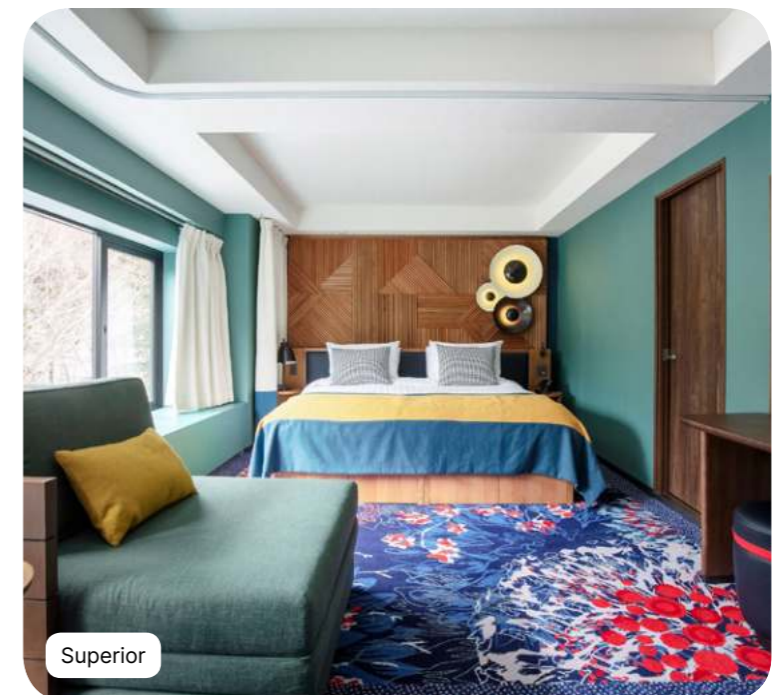


# Summary

<b>Accommodation</b>	<b>4</b>
<b>Sports &amp; Activities</b>	<b>12</b>
<b>Swimming Pools</b>	<b>14</b>
<b>Excursions*</b>	<b>17</b>
<b>Childrens' Services</b>	<b>18</b>
<b>Restaurants &amp; Bars</b>	<b>22</b>
<b>Practical Information</b>	<b>24</b>



# Accommodation



## Superior



Name	Min. m <sup>2</sup>	Highlights	Capacity
Family Superior Room - Mountain View	38	Mountain view	1 - 4
Superior Room	38		1 - 2
Junior Family Superior Room	42		1 - 3
Family Superior Room	38		1 - 4
Master Family Superior Room	64	children Area	1 - 5
Superior Room - Mobility Accessible	38		1 - 2
Interconnecting Junior Family Superior Rooms	84		1 - 6

### Equipment

- Air conditioning
- Telephone
- Wi-Fi Access
- TV Screen
- Kettle - Coffee/tea making facilities
- Iron and ironing board in the room
- Safe deposit box
- USB socket
- Heating
- Electricity : 100-127 V

### Bathroom

- Slippers
- Hair Dryer
- Magnifying mirror
- Amenities (shampoo, shower gel, body lotion)

### Services

- Luggage service
- Laundry service (extra charge)

## Deluxe



Name	Min. m <sup>2</sup>	Highlights	Capacity
Deluxe Room - Forest View	38	Forest view , Lounge area	1 - 3

### Equipment

- Air conditioning
- Baby bed (Must be pre-booked)
- Club Med Baby Welcome
- Telephone
- Wi-Fi Access
- TV Screen
- Sofa
- Kettle - Coffee/tea making facilities
- Iron and ironing board in the room
- Safe deposit box
- USB socket
- Heating
- Electricity : 100-127 V

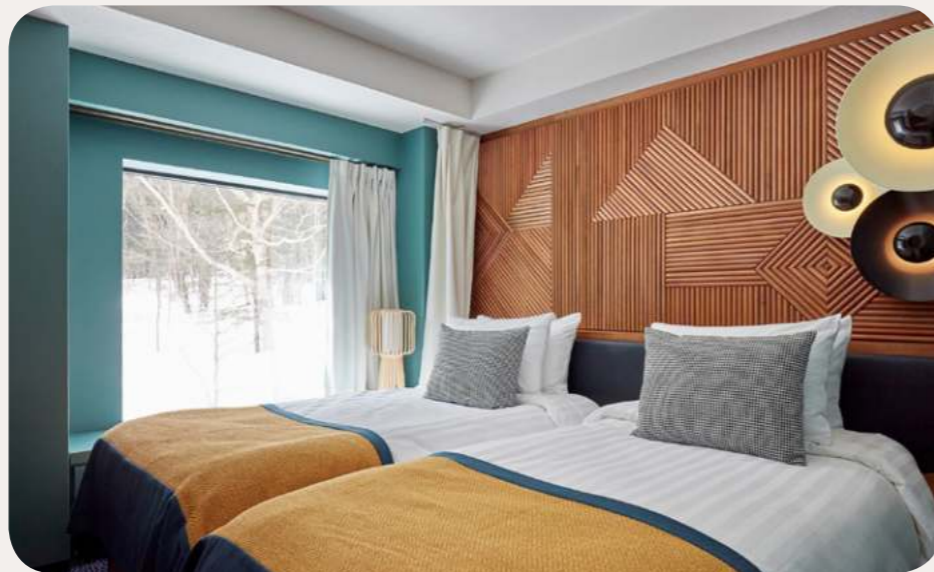
### Bathroom

- Bathtub
- Bathrobe
- Slippers
- Hair Dryer
- Magnifying mirror
- Amenities (shampoo, shower gel, body lotion)
- Amenities : accessories (vanity kit, manicure kit, etc.)

### Services

- Luggage service
- Minibar (non-alcoholic drinks) - refilled weekly
- Pool towel
- Laundry service (extra charge)

**Suite**



Name	Min. m <sup>2</sup>	Highlights	Capacity
Family Suite	55	Fir Tree View, Children's Separate Room, Lounge area	1 - 5
Master Family Suite – Duplex	72	Split-level family room, Children's Separate Room, Living Room	1 - 5

**Equipment**

- Air conditioning
- Baby bed (Must be pre-booked)
- Club Med Baby Welcome
- Telephone
- Wi-Fi Access
- TV Screen
- Espresso machine
- Kettle - Coffee/tea making facilities
- Iron and ironing board in the room
- Safe deposit box
- USB socket
- Heating
- Electricity : 100-127 V

**Bathroom**

- Bathtub
- Shower
- Bathrobe
- Slippers
- Hair Dryer
- Magnifying mirror
- Amenities (shampoo, shower gel, body lotion)
- Amenities : accessories (vanity kit, manicure kit, etc.)
- Bidet

**Services**

- Luggage service in room
- Inclusive of room service for continental breakfast
- Minibar (non-alcoholic drinks) - refilled daily
- Turn down service
- Pool towel
- Laundry service (extra charge)
- Cleaning on demand

# Sports & Activities

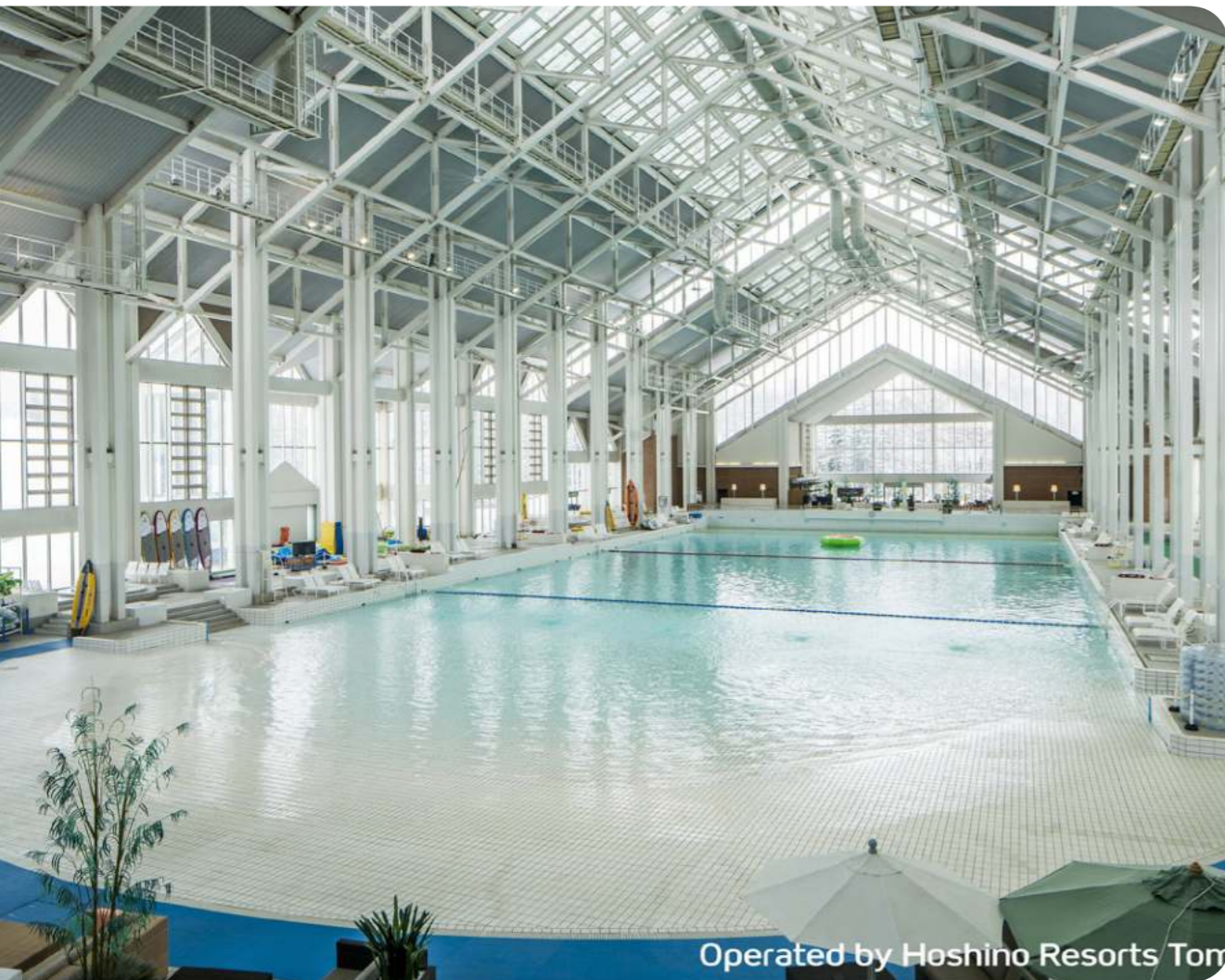


## Land Sports & Leisure

	Group Lessons	Free Access	At extra cost course	Min. age (years)	Dates of Availability
Golf*		✓	✓	16 years old	Always
Archery		✓		6 years old	From 01-06-2023 to 09-10-2023
Trapeze & Circus		✓		4 years old	From 01-06-2023 to 09-10-2023
Biking	Free access			11 years old	Always
Fitness	Group lessons for all levels / Free access			16 years old	Always
Tennis	Initiation			4 years old	Always
Hiking	Group lessons for all levels / Free access			8 years old	From 01-06-2023 to 09-10-2023
Entertainment		✓			Always
Swimming Pool		✓			Always
Bocceball	Free access				Always
Cookery lessons	Group lessons for all levels				Always
Nature walk	Group lessons for all levels				Always
Table pool*			✓		Always
Table Tennis	Free access				Always
Excursion*		✓	✓		Always

\*on demand  
 \*\*Depending on weather conditions  
 \*\*\* Pre-bookable green fee packages at extra cost

# Swimming Pools



## Indoor swimming pool Mina Mina

Indoor Pool



Closed october-november.

G.Ms are offered free access to "Mina Mina Beach", which is the largest indoor wave pool in Japan. It is located right in front of the Resort.

Children are under the supervision of their parents or an accompanying adult.



## Excursions\*



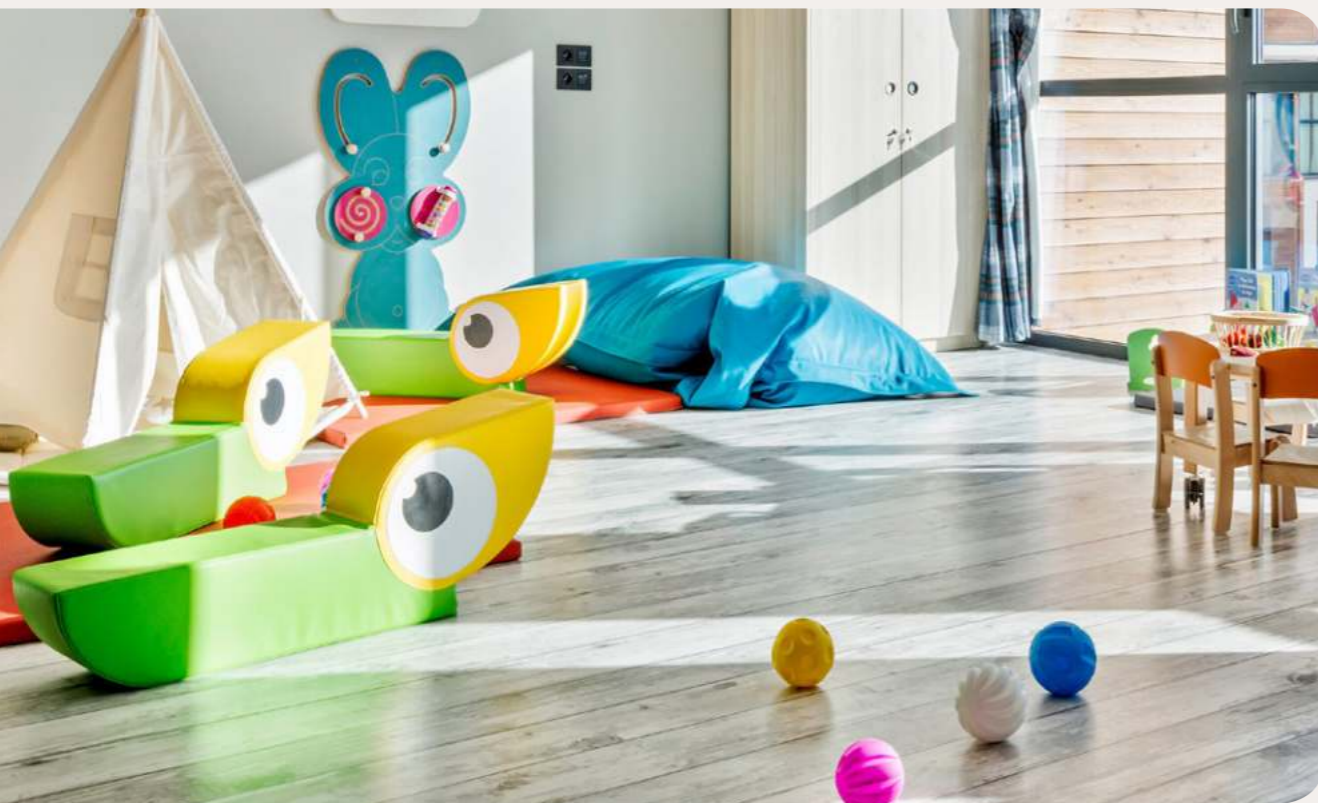
### **Nature getaways :**

River fishing / Unkai terrace

### **Sense of adventure :**

Sorachigawa River Rafting

# Childrens' Services



## Childrens' Clubs

Age Range	Name	Included Activities	On demand activities	Dates of Availability
2 to 3 years	Petit Club Med*	Show time, Walks		Always
4 to 10 years	Mini Club Med +	New fun activities, Archery group classes, Flying trapeze group lessons, Tennis group lessons, Show time, Fun outings		Always
11 to 17 years	Club Med Passworld	Archery group classes, Flying trapeze group lessons, Tennis group lessons, Show time, Services and facilities		Always

## Childrens' Activities

Age Range	Included Activities	On demand activities
2 to 3 years	Family show time, Family "Big Snack"	
4 to 10 years	Family show time, Family "Big Snack", Family tournaments & games, Accompanied rides, Free access to tennis courts	
11 to 17 years	Family show time, Family "Big Snack", Family tournaments & games, Power walk, Accompanied rides, Free access to tennis courts	

\*on demand



## Childrens' Services

Age Range	Included activities & facilities	On demand activites & facilities
2 to 3 years		Pyjamas Club
4 to 10 years		Pyjamas Club

\*on demand

## Restaurants & Bars



### Bars

#### Unkai bar

Main bar

#### The Nest Bar

Wine Bar

## Restaurants



### Itara

#### Main Restaurant

Savour a variety of international and Japanese delights, including the freshest fish, from our main buffet restaurant. With 4 distinct spaces, each inspired by Hokkaido regions, the setting will surely surprise. Bucolic Valley, Farmhouse, Sea of clouds, and Rays of sun, with the Unkai Terrace (available in summer only), each offers a unique gastronomic adventure to share. For added convenience, a Baby Corner will offer a place to prepare special meals, and a variety of amenities to make dining with a young one relaxing.

### Haku

#### Speciality Restaurant

Imagine the scent of fresh yakiniku steaming off the grill. Haku, our Hokkaido Resort speciality restaurant, prepares this beef Japanese delicacy to perfection paired with a selection of delicious side dishes to complement. Open for dinner, enjoy an authentic dining experience with a design inspired by Japanese indigenous tribes to cap off an unforgettable day.

Please note that the basic menu option is included in our all-inclusive package. Premium menu option is at additional cost.

Operation date and timing are subjected to changes in resort, please check with resort team on site.



# Practical Information



## Address

CLUB MED TOMAMU HOKKAIDO  
NAKA-TOMAMU  
Hokkaido  
079-2204, Japan

No minimum age

## Hygiene & Safety

Safe Together. Club Med has implemented new hygiene and safety measures to offer you peace of mind and a most joyful experience.

## Easy arrival

Easy Arrival service\*

Register & manage your details online, we will have everything ready for your arrival :

Easy Check in – check out

Children's club enrolment

Club Med online Account

Available on your Member Space

\*Selection of services according to Resorts

## CHECK-IN/CHECK-OUT

Times of arrival/departure from the Resort

For GM arrival with stay package / stay package inclusive transfer only (flight not booked with Club Med):

For all stays, arrival between 3pm and 8pm. G.M@s who arrive early may be able to have lunch at extra cost, subject to availability.

Availability of rooms: between 3pm and 8pm.

Rooms to be vacated by 10am on day of departure, for departure from the Resort by 3pm (breakfast and lunch included).

Should any of these times change, the revised times will be given in your "Holiday Rendez-Vous".

For GM arrival with flights booked with Club Med:

- Room to be allocated as soon as possible according to availability

- Food & Beverage service access to resort facilities and F&B services are included from arrival until departure time

## TRANSFERS

Obihiro airport (70 mins.)

Chitose airport (95 mins.)

Chitose airport (96 mins.)

Chitose Airport - Private transfer (60 mins.)

## My Club Med App

My Club Med App : All you need is My Club Med App - your ideal travel companion to prepare and organize your stay. Discover the Resort map, facilities and activities, and enjoy dedicated services to make the most of your stay.

Download My Club Med App on the App Store or Google Play.